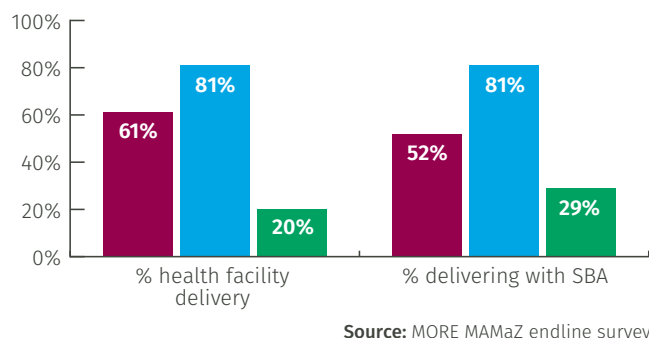


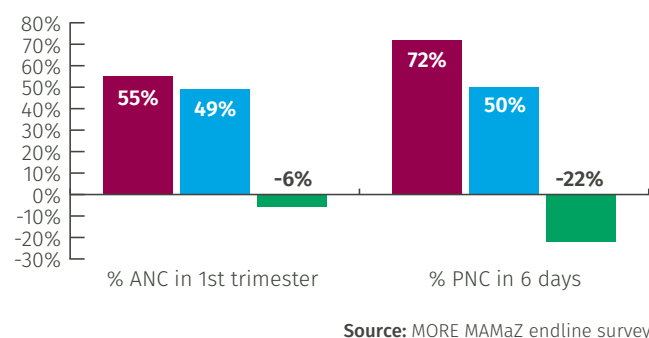
# Results: Mkushi district

MORE MAMaZ was operational from April 2014–September 2016

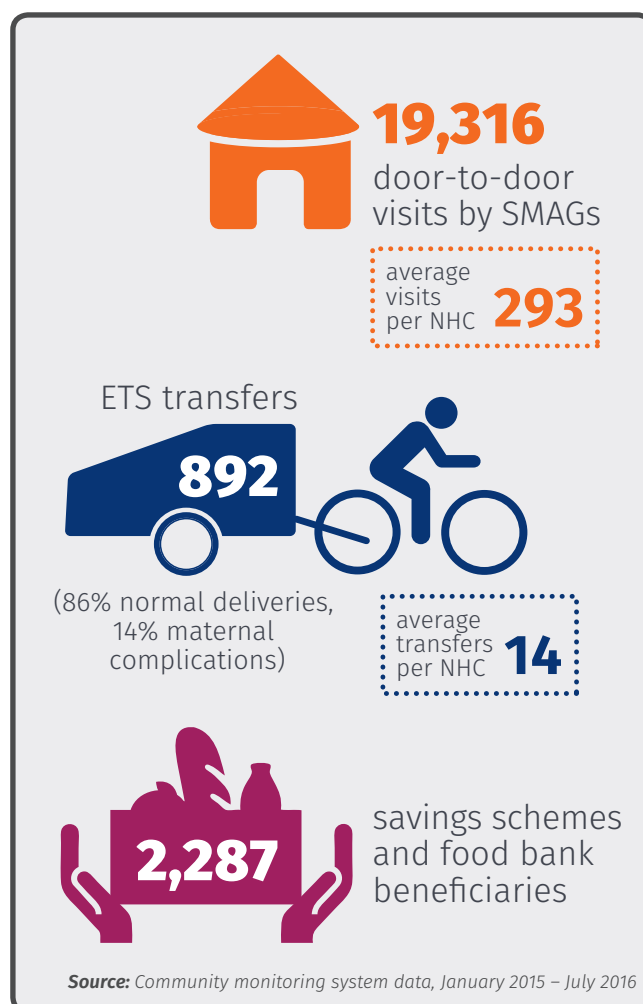
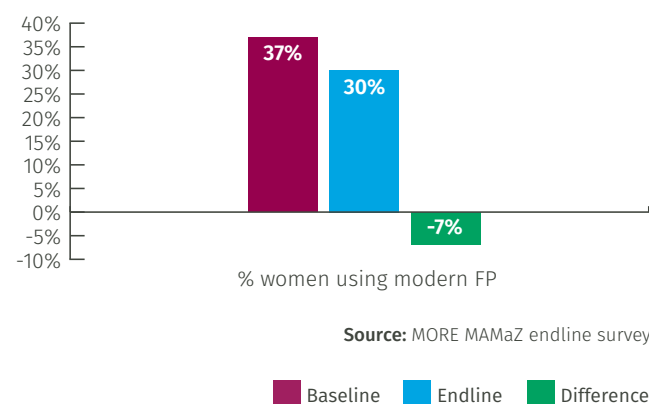
**Figure 1: Changes in institutional delivery and skilled birth attendance**



**Figure 2: Changes in utilisation of antenatal and postnatal care services**



**Figure 3: Changes in utilisation of modern family planning methods**



## MAMaZ and MORE MAMaZ in Mkushi

### Timeframe:

September 2011 – September 2016 (5 years)

**Intervention health facilities:** 11

**Intervention communities:** 68

**SMAGs trained:** 793

**Population coverage by SMAGs:** 79,672 (61%)

**Emergency transport vehicles supplied:** 41

**Emergency transport drivers trained:** 78

MORE MAMaZ is funded by Comic Relief. The programme is implemented by Transaid, Health Partners International, Development Data and Disacare in partnership with the Ministry of Health and District Health Teams.

